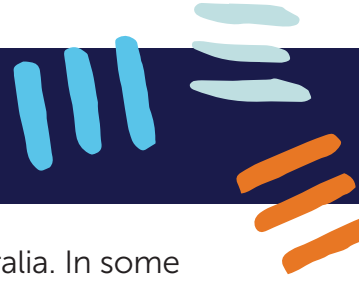


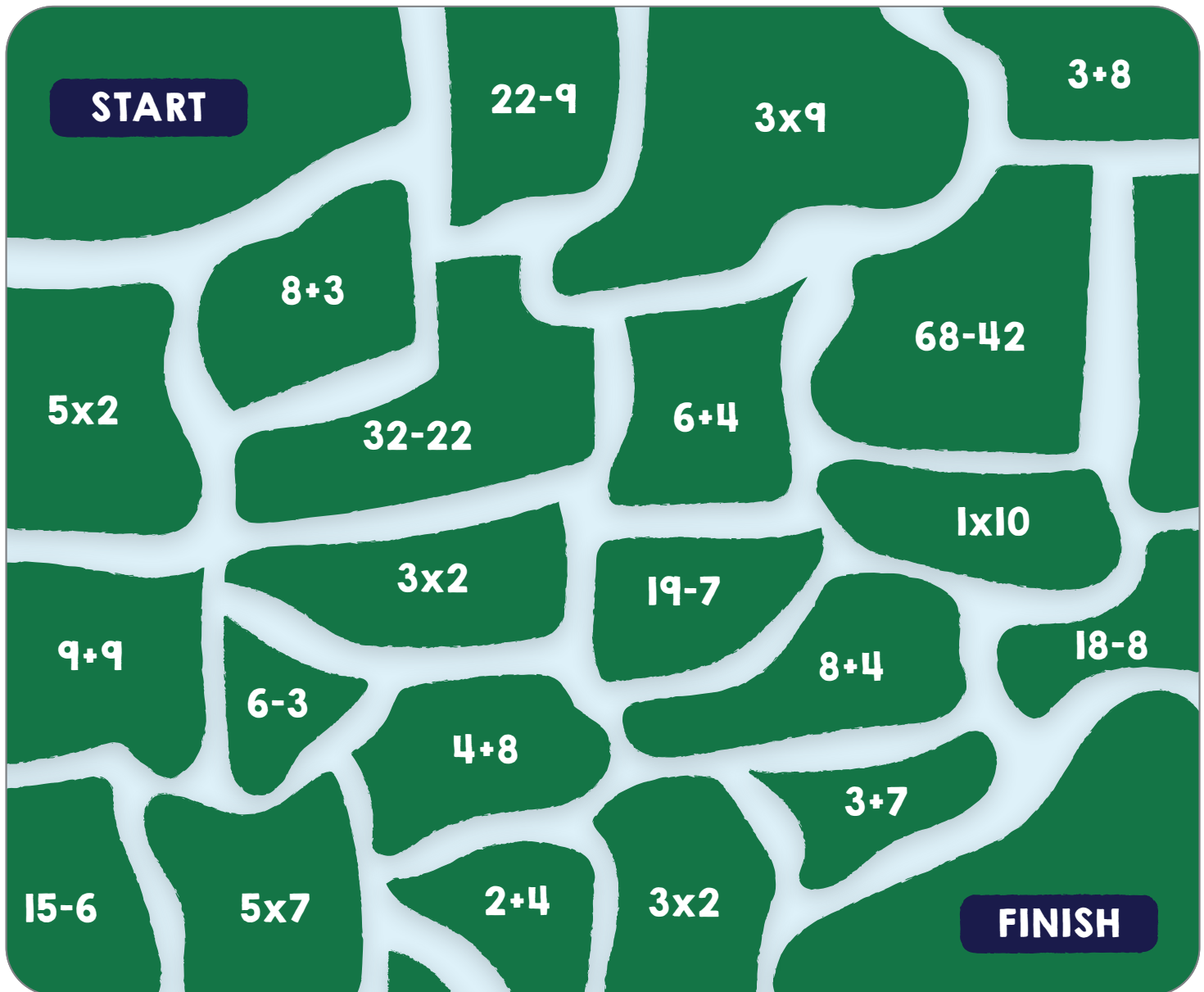
SOUTH EAST ASIA



South East Asia is a large region made up of many countries, to the north of Australia. In some places there are not many people who have heard of Jesus. CMS missionaries in South East Asia are teaching the Bible, teaching English and encouraging followers of Jesus to talk about him with their friends and neighbours.

ACTIVITY

There are more than 25,000 islands and islets in South East Asia. Can you get to the finish by crossing over the islands where the equations equal 10?



Did you know?

Many of the small islands in South East Asia are the tips of volcanoes rising from the seabed. Some of the volcanoes are active.



Fun fact:

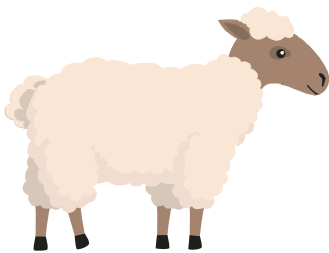
South East Asia's rice fields cover 48 million hectares.

BIBLE CHALLENGE

Jesus told the parable of the lost sheep to show how our Heavenly Father celebrates when people put their faith in Jesus. Read Luke 15:6 in the Bible. Can you find your way through the maze by connecting letters to spell out the key words from 'The Parable of the Lost Sheep' listed below?

HINT: YOU MAY MOVE FORWARDS, BACKWARDS, UP OR DOWN, BUT NO LETTER MAY BE CONNECTED MORE THAN ONCE.

GATHERED
JESUS
TEACH
LOSES
JOYFULLY
SINNER
REPENTS



START	G	A	T	W	N	L	K
Q	P	R	U	H	C	F	Z
I	A	S	F	E	R	E	R
G	O	J	S	H	K	D	M
L	Y	Z	E	S	X	J	E
C	F	V	B	O	L	N	S
M	U	L	L	Q	H	W	R
T	Y	I	Y	O	C	A	E
L	Z	X	S	I	V	B	N
A	S	D	F	N	N	E	R
H	J	K	D	R	C	I	R
FINISH	S	T	N	E	P	E	P

TIP: READ THE WHOLE CHAPTER IN THE BIBLE TO GET THE FULL STORY

PRAY

Thank God

that many South East Asian people are curious to know about Jesus and how he can change lives.

Ask God

to help CMS missionaries to make good friends who want to know more about Jesus.



Whenever you eat **rice**, pray for South East Asia!